

PEARS' SOAP

The famous English Complexion Soap

Established in London 100 years.

A SPECIALTY FOR THE SKIN AND COMPLEXION

As recommended by the greatest English authority
on the Skin,

PROFESSOR SIR ERASMUS WILSON, F.R.S.,
President of the Royal College of Surgeons.

15 INTERNATIONAL AWARDS.

Good Complexion & Nice Hands

Nothing adds so much to personal appearance as a bright clear complexion and a soft skin, with these the plainest features become attractive, without them the handsomest are but coldly impressive. Many a complexion is marred by impure alkaline and coloured Toilet Soap.

PEARS' SOAP

Is specially prepared for the delicate skin of ladies and children and others sensitive to the weather, winter or summer. In England it is pre-eminently the complexion Soap, and is recommended by all the best authorities, as, on account of its emollient, non-irritant character, *Redness, Roughness and Chapping* are prevented, and a *clear bright appearance and soft velvety condition imparted and maintained, and a good, healthy and attractive complexion ensured.* Its agreeable and lasting perfume, beautiful appearance, and soothing properties, commend it as the greatest luxury of the toilet. Its durability and consequent economy is remarkable.

THE BEST DRUGGISTS SELL IT.

*For the hands and complexion
I prefer it to
any other.*

Mrs. Langtry

MRS. LANGTRY:—FROM A PHOTOGRAPH BY VAN DER WEYDE LONDON.

STEEL PENS

Sold throughout the world



Fig. 1.

Fig. 2.



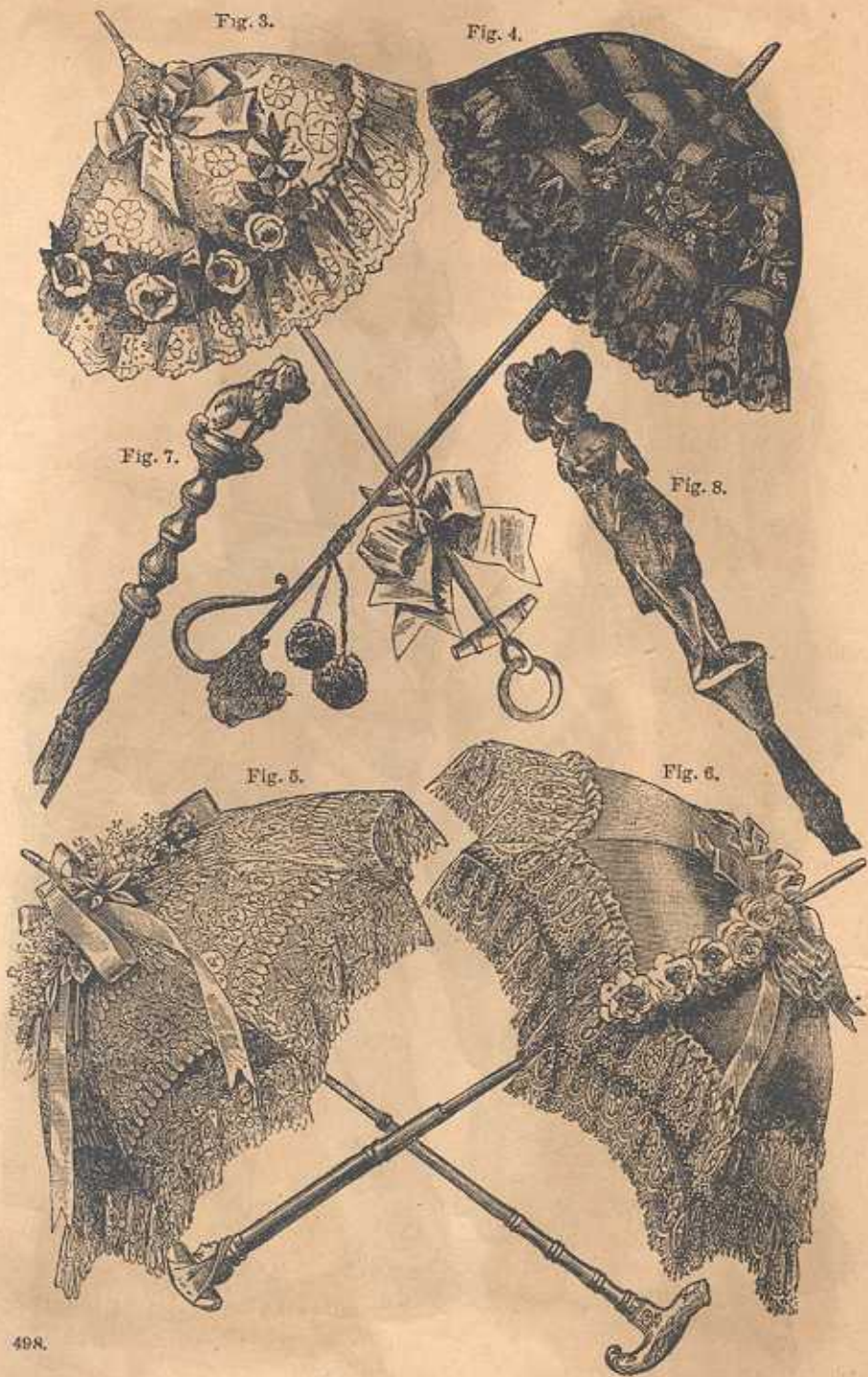


Fig. 3.

Fig. 4.

Fig. 7.

Fig. 8.

Fig. 5.

Fig. 6.

Fig. 9.



Fig. 11.



Fig. 10.

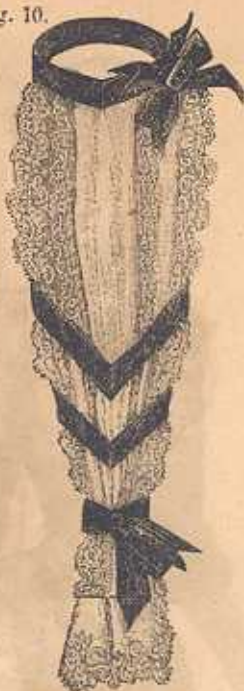


Fig. 12.



Fig. 13.



Fig. 14.



Fig. 17.



Fig. 18.



Fig. 19.



Fig. 20.





Fig. 21.

Fig. 23.



Fig. 22.



Fig. 24.



Fig. 25.



Fig. 27.

Fig. 26.

Fig. 28.

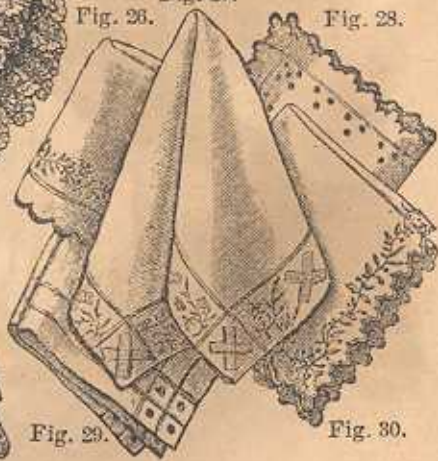
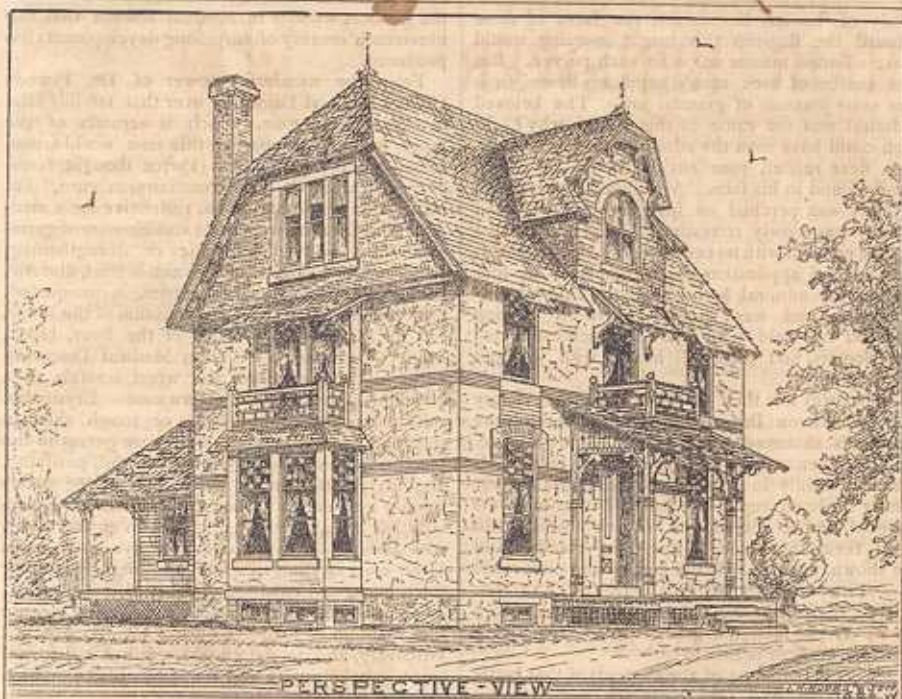
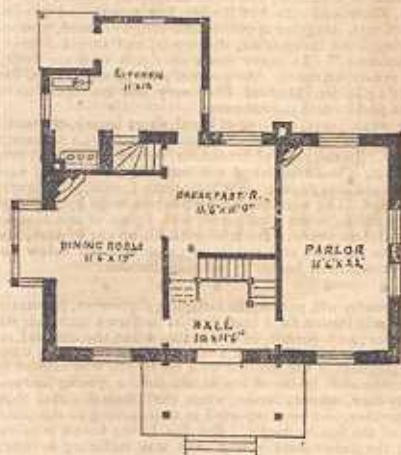


Fig. 29.

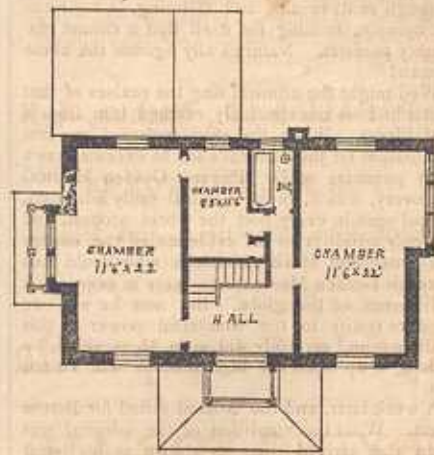
Fig. 30.



PERSPECTIVE - VIEW



FIRST FLOOR PLAN



SECOND FLOOR PLAN

STRUCTURAL GOTHIC.

Drawn expressly for GODEY'S LADY'S BOOK, by Isaac H. Hobbs & Son, Architects,
No. 520 Walnut street, Philadelphia.

The design is structural gothic, intended to display the materials used in construction to the best advantage. The base-course broken range masonry, the water-table dressed stone, also windows and door-sills; the superstructure of rubble masonry pointed with mortar, matching stone, and a black $\frac{1}{4}$ " line upon each joint. The gable ends are tile roof slate. The building finished in natural

wood inside, such as chestnut, ash, or redwood, price \$4,000. If built of frame, \$2,500 in good style complete.

Hobbs' Architecture sent to any address on receipt of \$3.50, containing 123 designs and plans of residences, handsomely bound in cloth; also catalogue of architecture, consisting of 18 designs and plans of houses, post free, 35 cents.